

Beam Cam - Laser Beam Profiler

v2.0

Get a full picture of your system's optical performance with World Star Tech's Laser Beam Profiler. The Beam Profiler allows you to see the exact shape and features of your laser beam at a microscopic scale. Designed for repeatable, reliable, and simple data acquisition, it is ideal for manufacturing, servicing, and assembly applications.



The windowless 1.3 Megapixel 1/2" sensor captures beam profiles without the fringing effects present with standard image sensors. View intricate beam features as small as 5.2 μm .

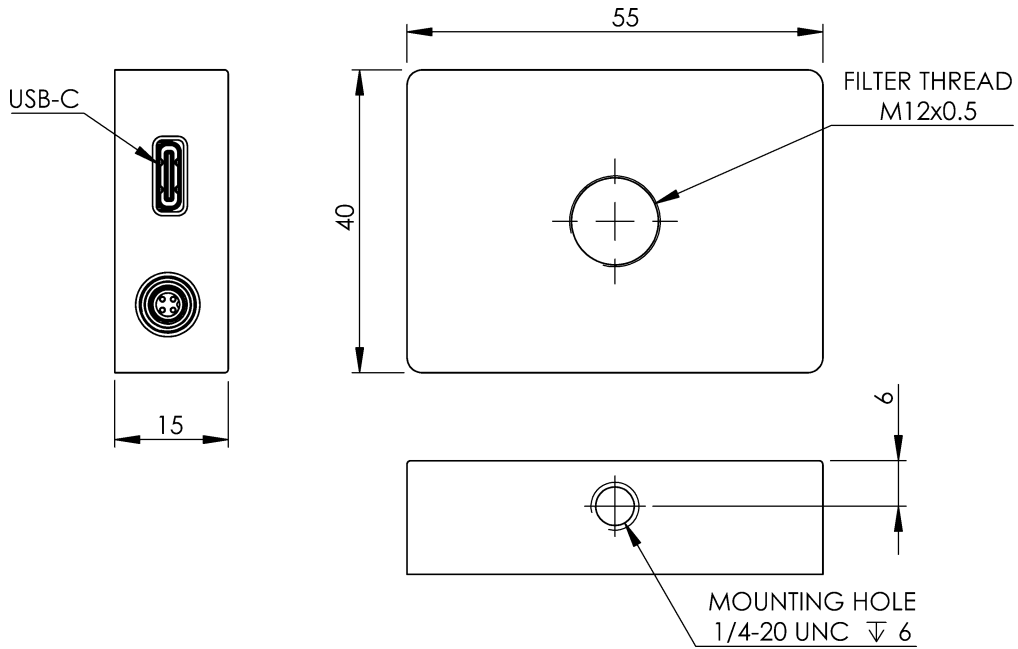
Visualize laser beams in real time with precision ellipse calculations and cross-sectional curve fitting. Key beam width parameters such as Full Width at Half Maximum (FWHM) and $1/e^2$ are clearly presented through an intuitive Windows software interface. Enhance your analysis with an interactive 3D beam view for a comprehensive spatial profile. Monitor beam centroid stability over time using the beam wander visualization tool, featuring customizable test durations and sampling rates. Results can be easily exported in various image formats or compiled into a detailed PDF report.

TECHNICAL SPECIFICATIONS

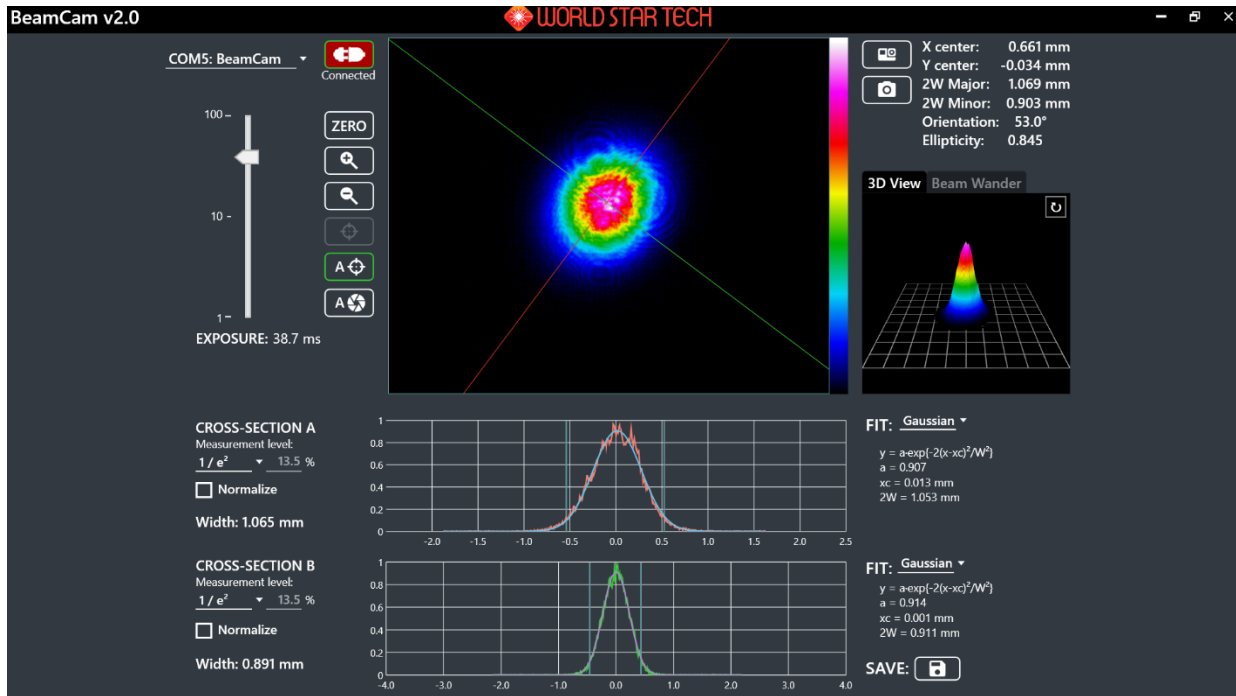
Spectral Sensitivity:	400 nm – 1100 nm
Resolution:	1280 x 1024, 10-bit
Pixel Size:	5.2 μm x 5.2 μm
Sensor Size:	1.27 cm
Frame Rate:	Up to 10 frames/second
Shutter Type:	Rolling
Power and Data Connection:	USB Type-C
Beam Width Presentation:	FWHM, $1/e^2$, custom level
Curve Fitting:	Gaussian, Top-Hat
Operating Temperature:	10°C – 50°C
Operating Humidity:	<85% relative, non-condensing

MECHANICAL SPECIFICATIONS

Size:	55mm x 40mm x 15mm
Weight:	65g
Mounting:	1/4"-20 UNC
Filter Mount:	M12x0.5 (OD4 filter provided)



Beam Cam Mechanical Drawing



Beam Cam Graphical User Interface